



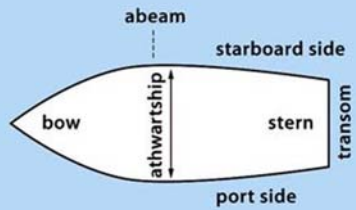
## Nautical terms & vessel terminology

## Objectives

- ▶ Define 4 terms relating to directionality on a vessel
- ▶ Delineate 3 vessel dimensions
- ▶ Describe the function of 5 structures
- ▶ Identify at least 3 vessel spaces

## Nautical terms

### ▶ Vessel orientation

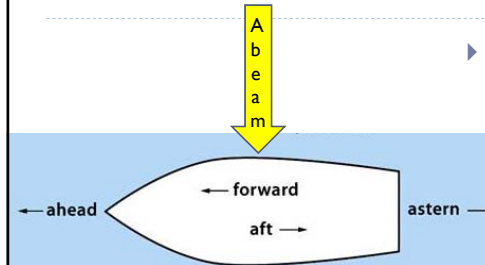


US Coast Guard Auxiliary 2007



## Nautical terms

### ▶ Vessel directionality



## Nautical terms

### ▶ Vessel dimensions

- ▶ **Length overall (LOA)** – length from the tip of the bow to stern (o/a above)
- ▶ **Beam** – vessel width at its widest point (b below)

- ▶ **Draft** – vertical distance between the waterline & the bottom of the hull (d)
- ▶ **Freeboard** – distance from the waterline to the first deck (f)

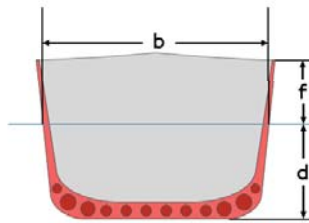
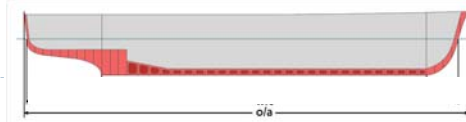


Image modified from  
[http://en.wikipedia.org/wiki/File:Ship\\_length\\_measurements.png](http://en.wikipedia.org/wiki/File:Ship_length_measurements.png)

## Nautical terms

### ▶ Vessel spaces & other structures

- ▶ **Hull** – shell and framework of the basic flotation-oriented part of a ship



webuildanyboat.com

## Nautical terms

### ▶ Vessel spaces & other structures

- ▶ **Hull** – shell and framework of the basic flotation-oriented part of a ship
- ▶ **Bilge** – interior of the hull
- ▶ **Deck** – permanent covering over a compartment or hull
- ▶ **Hatch** – an opening in a boat's deck



## Nautical terms

### ▶ Vessel spaces & other structures

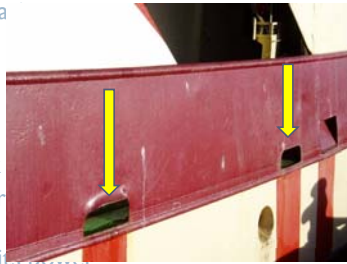
- ▶ **Hull** – shell and framework of the basic flotation-oriented part of a ship
- ▶ **Bilge** – interior of the hull
- ▶ **Deck** – permanent covering over a compartment or hull
- ▶ **Hatch** – an opening in a boat's deck
- ▶ **Rudder** – vertical plate or board for steering a boat
- ▶ **Screw** – propeller
- ▶ **Propeller** – type of fan that transmits power by converting rotational motion into thrust



## Nautical terms

### ▶ Vessel spaces & other structures

- ▶ **Hull** – shell and framework of the boat, the flotation-oriented part of a ship
- ▶ **Bilge** – interior of the hull
- ▶ **Deck** – permanent covering over a compartment or hull
- ▶ **Hatch** – an opening in a boat's deck
- ▶ **Rudder** – vertical plate or board for steering a boat
- ▶ **Propeller** – type of fan that transmits power to the propeller shaft by converting rotational motion into thrust
- ▶ **Scuppers** – drain holes on deck



## Nautical terms

### ▶ Vessel spaces & other structures

- ▶ Primary vessel navigation occurs on the **Bridge (wheelhouse / pilot house)**



## Nautical terms

### ▶ Vessel spaces & other structures

- ▶ **Engine room** – location of engine's, usually on a lower deck



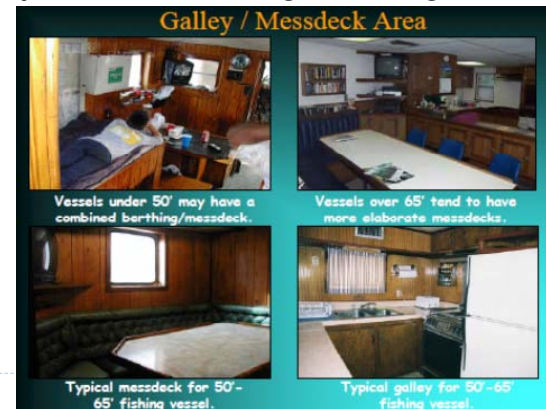
[http://circumnavigatormag.blogspot.com/2007\\_11\\_01\\_archive.html](http://circumnavigatormag.blogspot.com/2007_11_01_archive.html)

<http://www.trawlerlogistics.com/viewlisting.php?view=64>

## Nautical terms

### ▶ Vessel spaces & other structures

- ▶ **Galley / mess** – where cooking and/or eating occurs



### Nautical terms

- ▶ Vessel spaces & other structures
  - ▶ **Head** – space where marine toilet is located



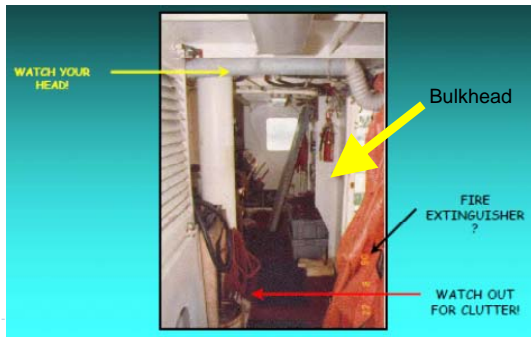
### Nautical terms

- ▶ Vessel spaces & other structures
  - ▶ **Cabin** – rooms for sleeping
  - ▶ **Bunk** – bed where you sleep



### Nautical terms

- ▶ Vessel spaces & other structures
  - ▶ **Bulkhead** – upright wall within the hull of the ship
  - ▶ **Passageway** - hallway



### Nautical terms

- ▶ Other –
  - ▶ **A-frame/gantry** – A-shaped structure used to assist with lifting



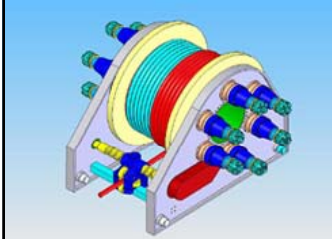
Trawler in Cameroon: Kim Dietrich, 2009

<http://celebrating200years.noaa.gov>



## Nautical terms

- ▶ Other –
  - ▶ **A-frame/gantry** – A-shaped structure used to assist with lifting
  - ▶ **Winch** – device used to haul line, cable, heavy objects



<http://www.cmtwinches.com>



<http://www.westequipment.com>

## Nautical terms

- ▶ Other –
  - ▶ **A-frame/gantry** – A-shaped structure used to assist with lifting
  - ▶ **Winch** – device used to haul line, cable, heavy objects
  - ▶ **Block** – pulley or set of pulleys



<http://www.sanctuarysi.com>



<http://laterallineco.com/blog/2008/11/04/>

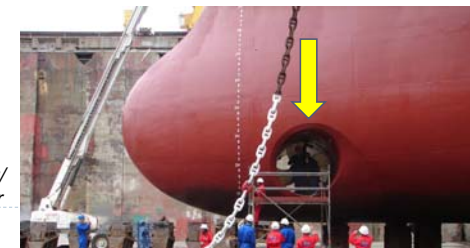
## Nautical terms

- ▶ Other –
  - ▶ **A-frame/gantry** – A-shaped structure used to assist with lifting
  - ▶ **Winch** – device used to haul line, cable, heavy objects
  - ▶ **Block** – pulley or set of pulleys
  - ▶ **Gangplank** – A movable bridge used in boarding or leaving a ship at a pier



## Nautical terms

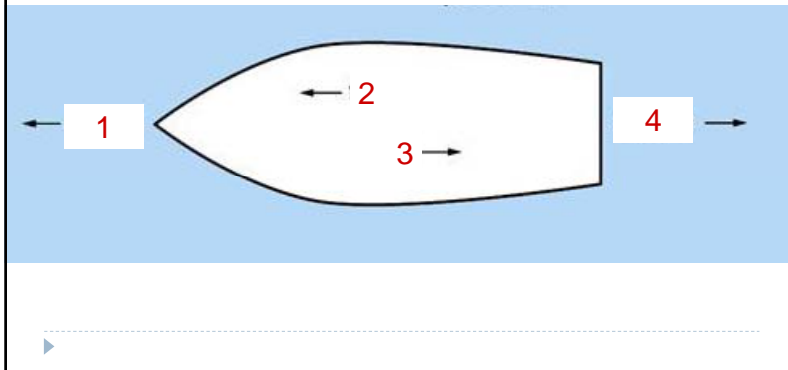
- ▶ Other –
  - ▶ **A-frame/gantry** – A-shaped structure used to assist with lifting
  - ▶ **Winch** – device used to haul line, cable, heavy objects
  - ▶ **Block** – pulley or set of pulleys
  - ▶ **Gangplank** – A movable bridge used in boarding or leaving a ship at a pier
  - ▶ **Bow thruster** - A small propeller at the bow, used for maneuvering



[http://commons.wikimedia.org/wiki/File:Repairing\\_a\\_bow\\_thruster.jpg](http://commons.wikimedia.org/wiki/File:Repairing_a_bow_thruster.jpg)

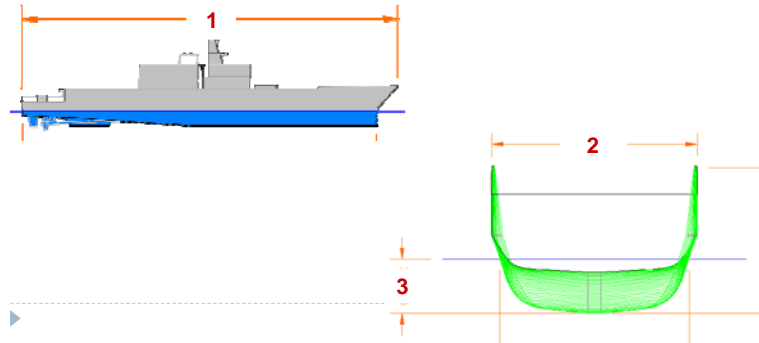
## Summary

- ▶ Name some terms relating to directionality on a vessel



## Summary

- ▶ Name some terms relating to directionality on a vessel
- ▶ Define the 3 vessel dimensions shown below



## Do these vessels have a deck? A hull?



<http://www.panda.org>



<http://www.sahara-developpement.com/en/ECONOMIE/Fishing.aspx>

## What are these & what's their function?



<http://www.nauticexpo.com/boat-manufacturer/propeller-420.html>

What is the function of this space?



What are 1, 2 & 3?



Match the vessel locations (left) with definitions (right)

- |              |                          |
|--------------|--------------------------|
| ▶ Head       | ▶ Place to eat / kitchen |
| ▶ Bunk       | ▶ Wall within vessel     |
| ▶ Passageway | ▶ Toilet                 |
| ▶ Galley     | ▶ Hallway                |
| ▶ Bulkhead   | ▶ Place to sleep         |

## References

- ▶ United States Coast Guard Auxiliary. 2007. Boating Skills and Seamanship, 13th Edition. International Marine / McGraw-Hill, Camden, ME.
- ▶ Thank you to Chris Heineken, Capricorn Fisheries (CapFish), Cape Town South Africa for sharing his observer training materials.