



# Observer Equipment Maintenance



# ALL Scales

- Require special care & maintenance
- Before & after each trip
  - Check accuracy using standard weights at LOP office (see example below)

Date: <b>28 Sep 2011</b>		Observer: <b>Kim Dietrich</b>		Trip ID: <b>54</b>	
Serial # and model: <b>LOP-01 ; 2 kg</b>			Serial # and model: <b>LOP-22 ; 50 kg platform</b>		
Standard wt (kg)		Test result	Standard wt (kg)		Test result
<b>0.5</b>		<b>0.52</b>	<b>10</b>		<b>10.05</b>
<b>1.0</b>		<b>1.03</b>	<b>20</b>		<b>20.1</b>
<b>1.5</b>		<b>1.53</b>	<b>35</b>		<b>35.14</b>



# ALL Scales

- Require special care & maintenance
- Before & after each trip (or 1X/month)
  - Check accuracy using standard weights at OP office
- After every use, rinse with fresh water & store in a dry place
- After each trip
  - Clean thoroughly (steel wool on brass scales)
  - Rinse with fresh water
  - Lubricate all springs with vegetable oil
  - Grease flatbed floating hangers with Lancote (grease)

# Hanging Scale (50kg)

- Hang from 3 or 4 points to stabilize





IN-025



IN-100M  
with Maximum  
Reading Pointer

## Brass scale – 2kg

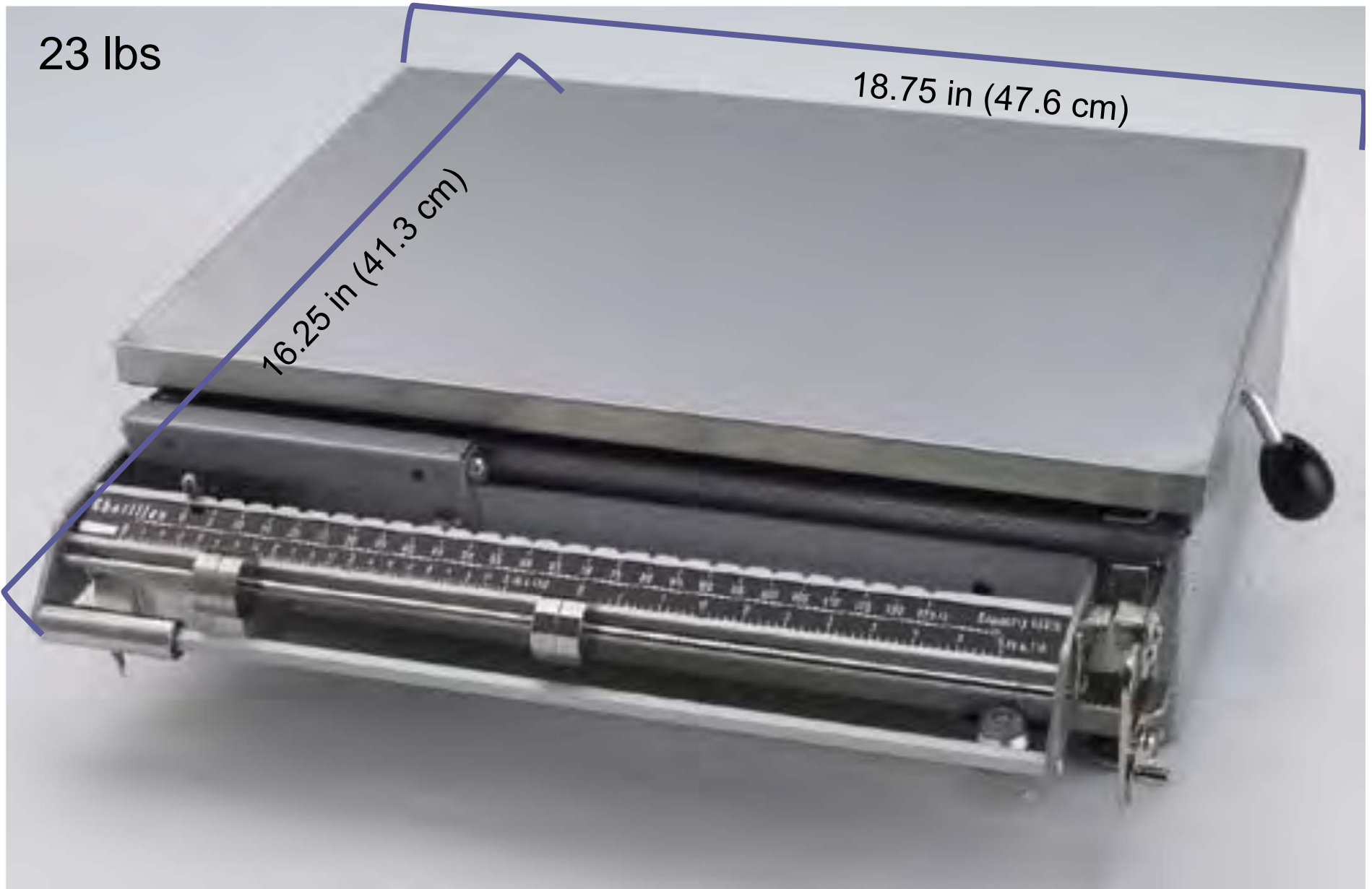
- Dual units - Be sure to use KG & NOT pounds





# Platform / flatbed scale

- Expensive & delicate
- 23 lbs – transport in yellow basket?
- When not in use, lock the weighing unit into stable position (lever on side)
- Protect from high impact (don't throw fish into basket on scale)
- Keep as clean & dry as possible
- Lubricate often
- Move the zero adjustment daily (to prevent from seizing)

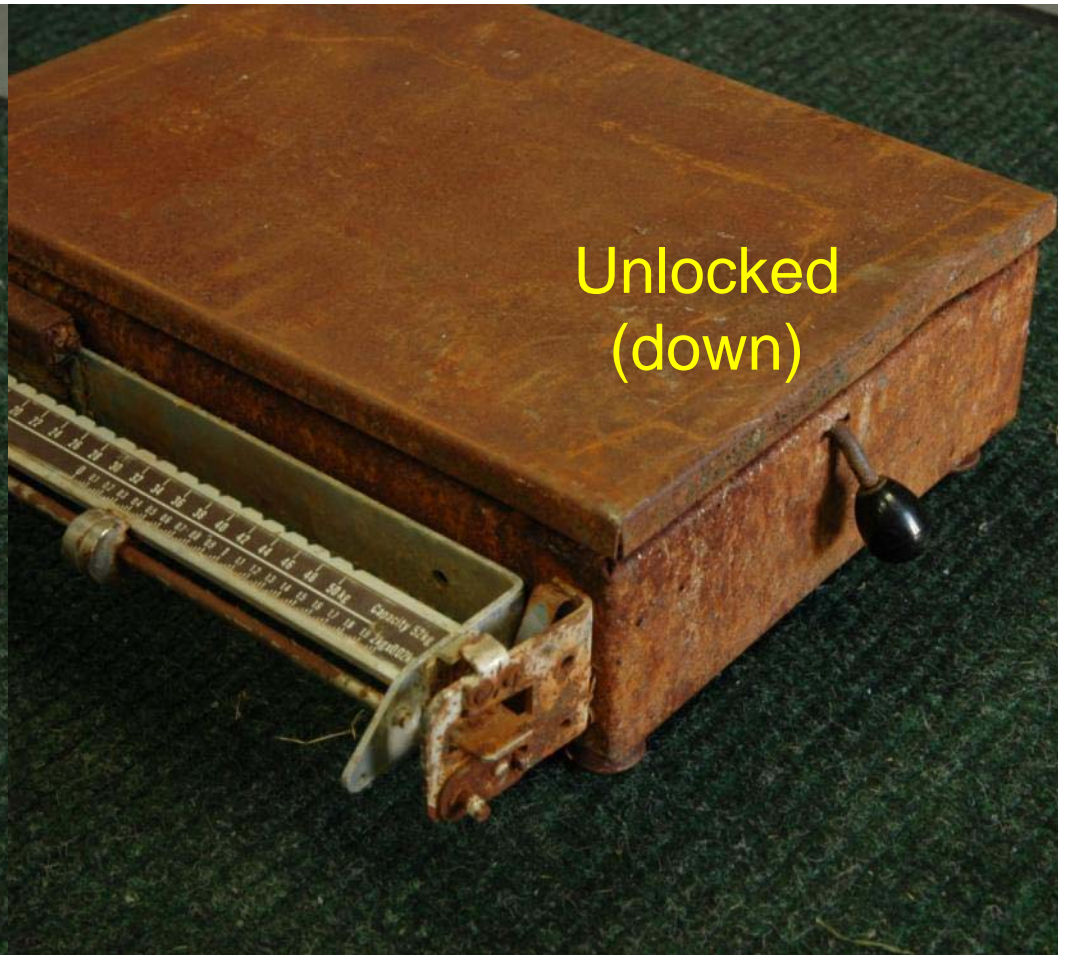




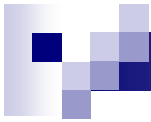




Locked  
(up)



Unlocked  
(down)

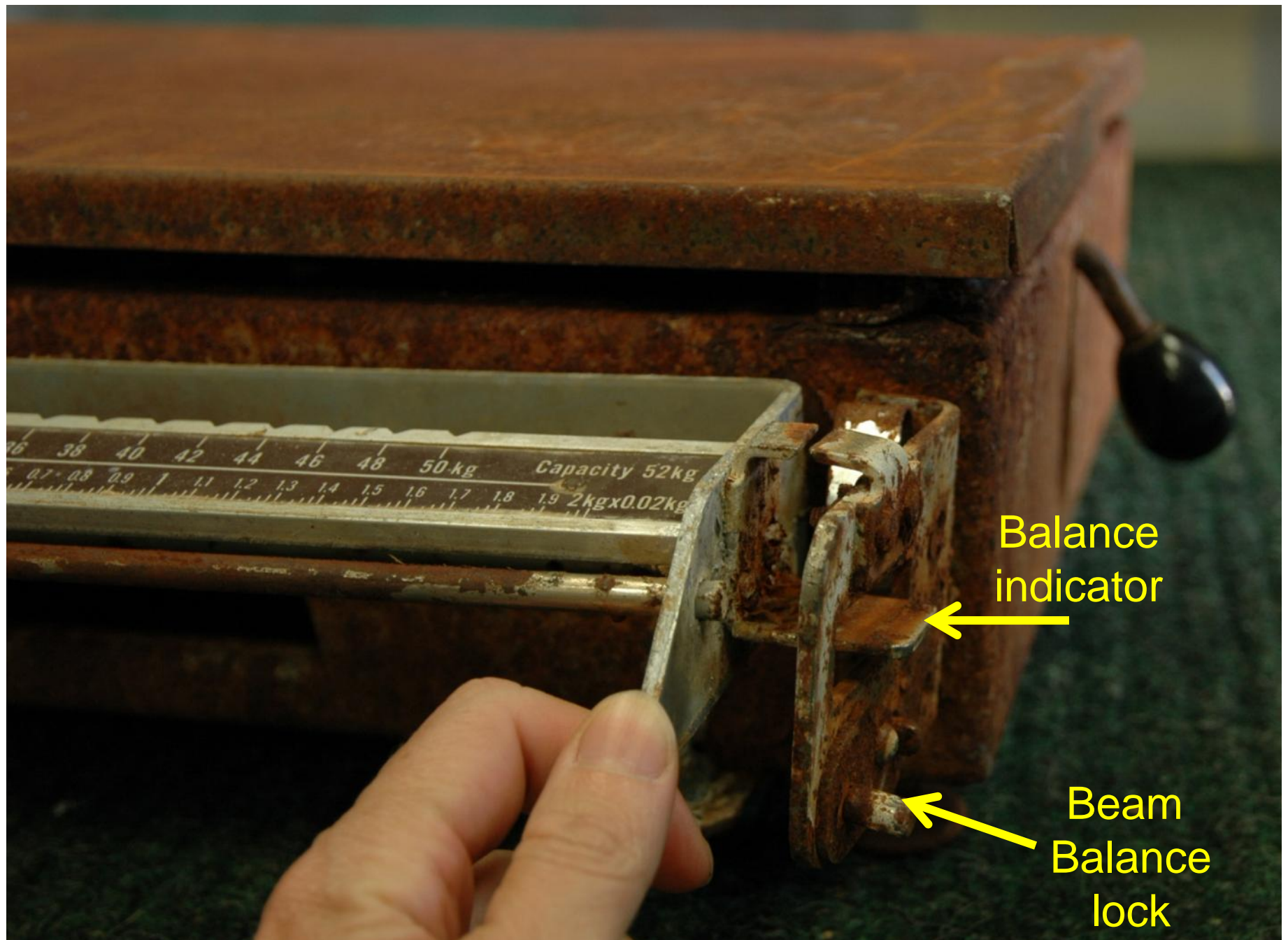


Beam  
balance

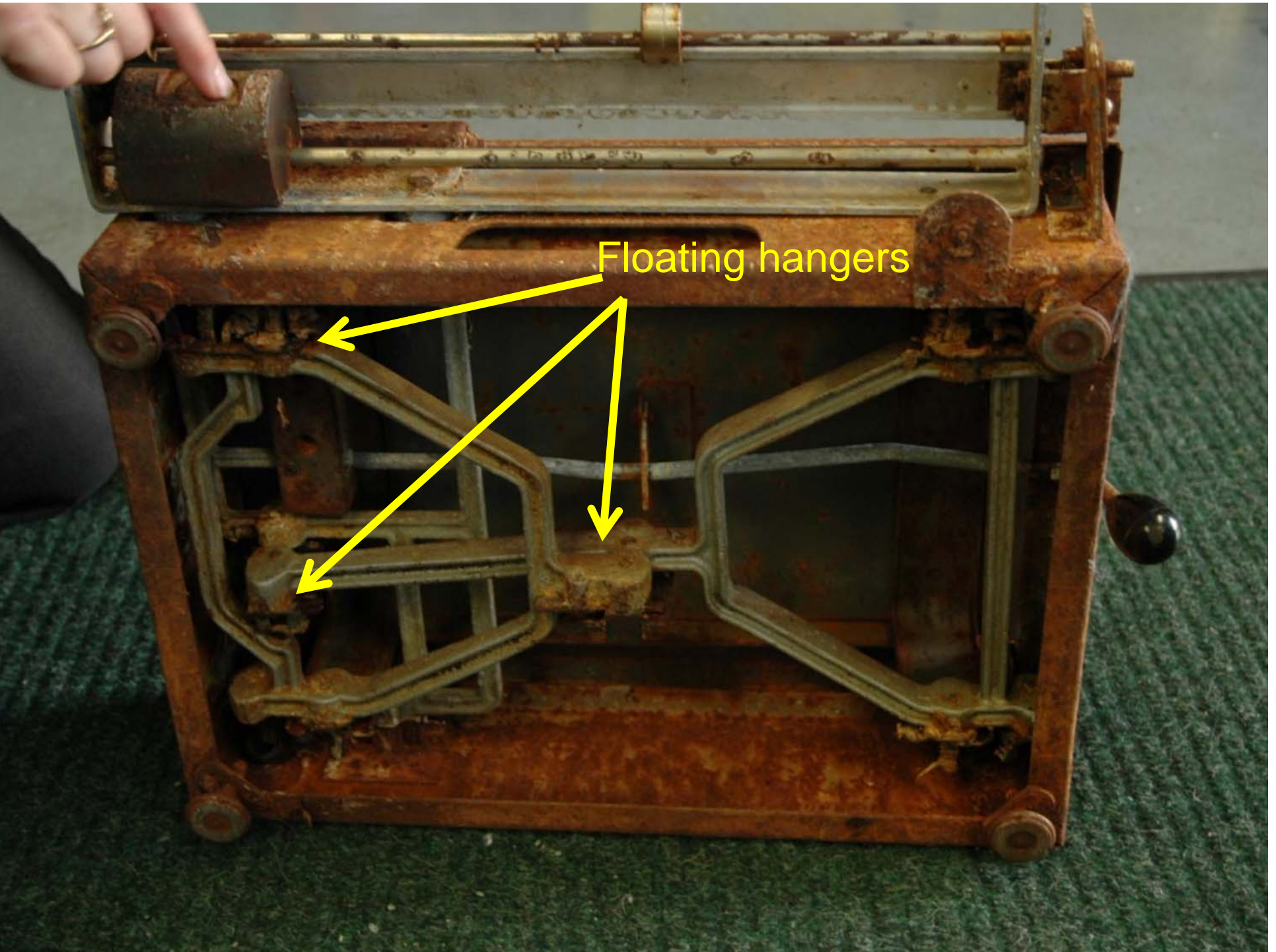
Beam  
Balance  
lock











Floating hangers

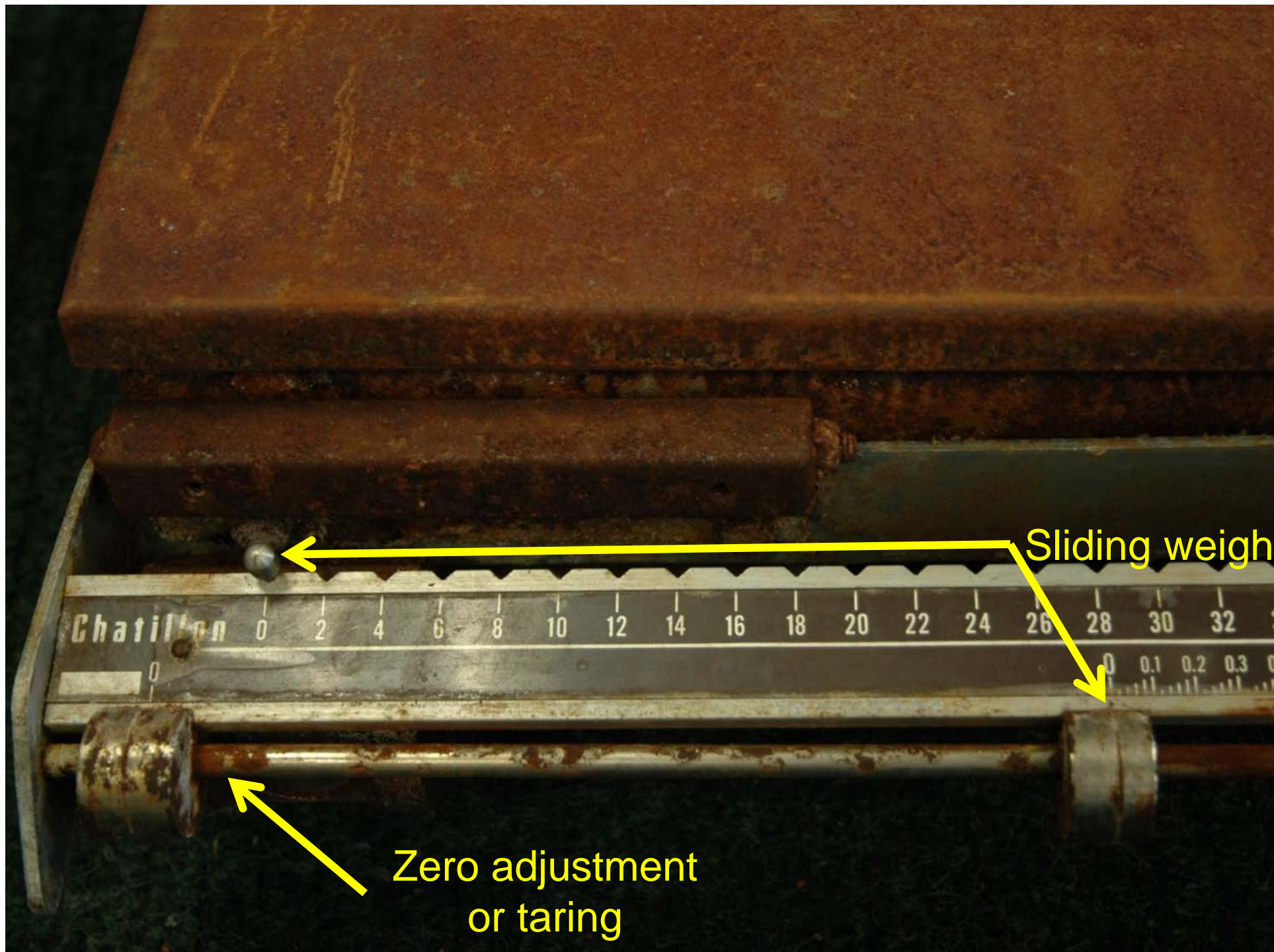


## **Floating hangers**

- Keep well greased
- Rinse with fresh water & store in dry location

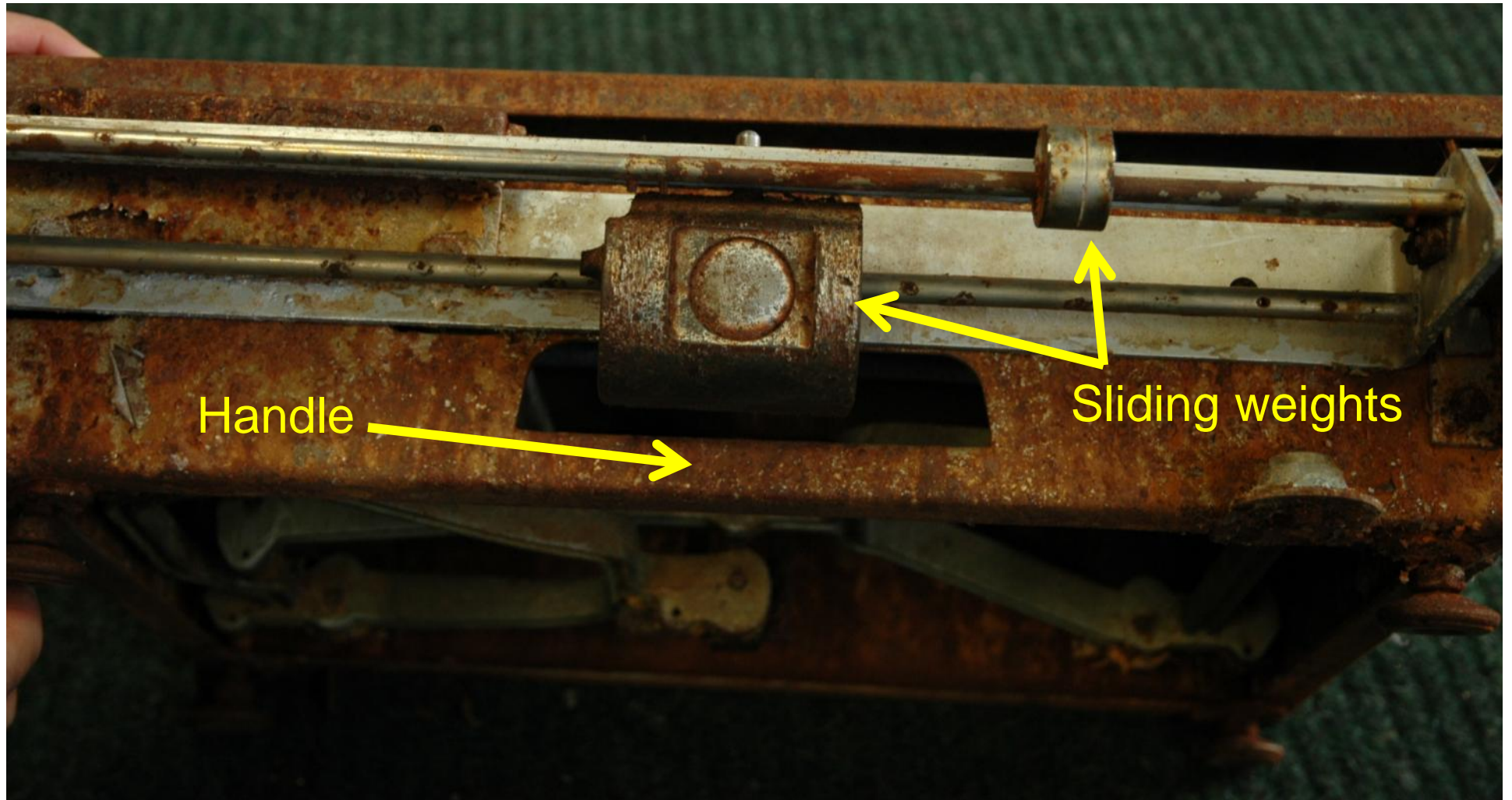
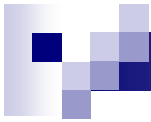






Sliding weight

Zero adjustment  
or taring







NEVER use balance  
Beam to carry

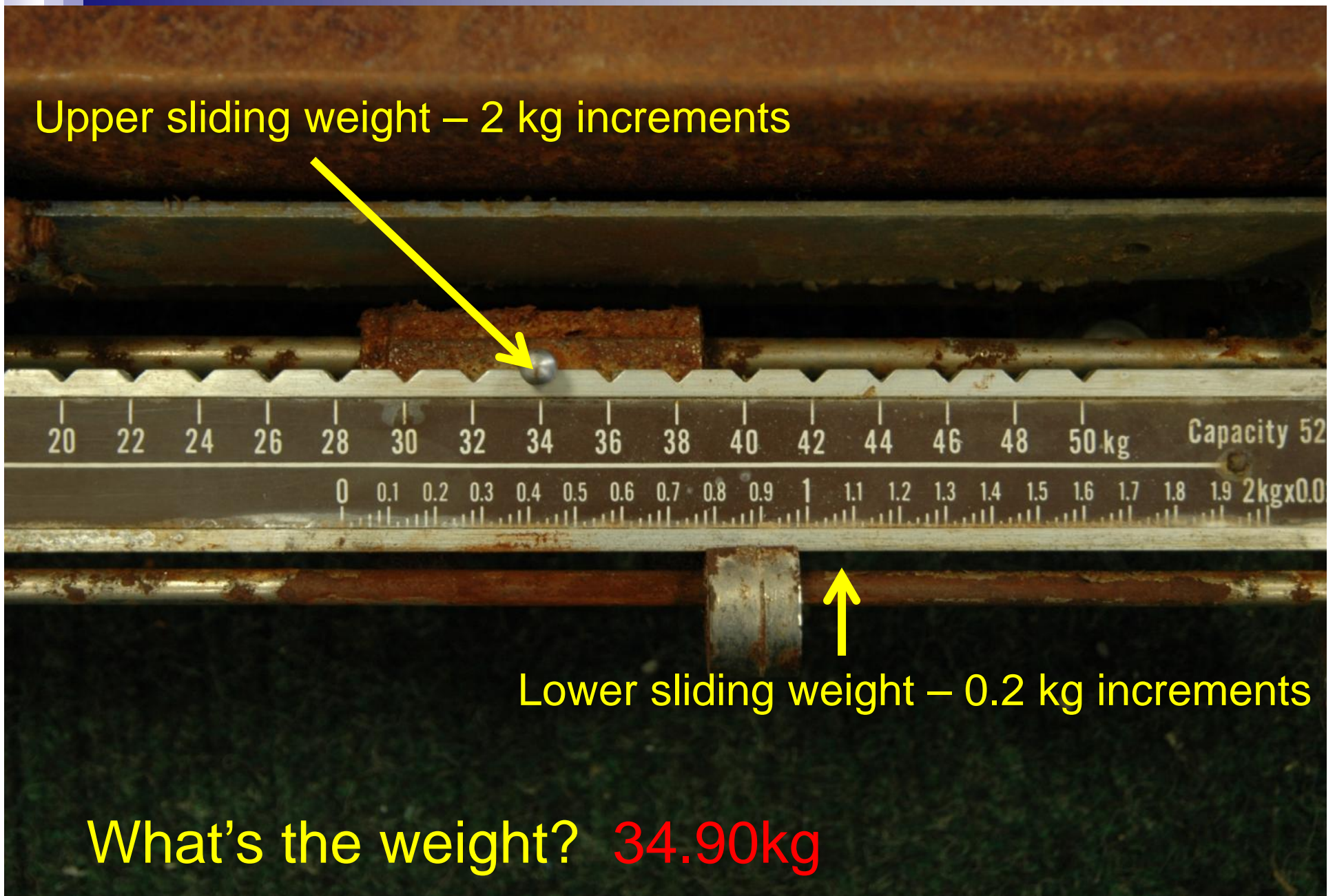
Always use  
handle  
to carry



Upper sliding weight – 2 kg increments

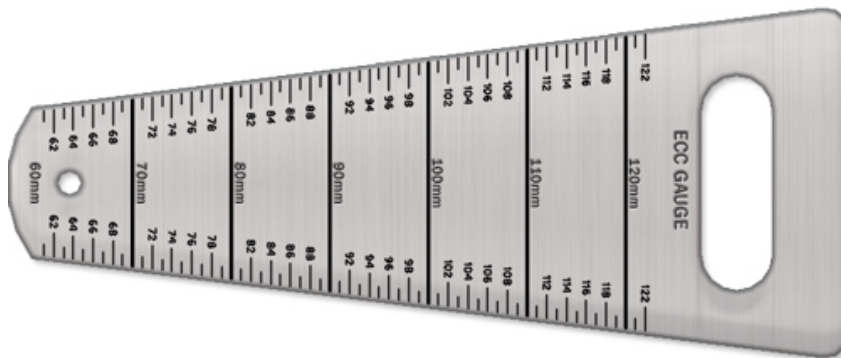
Lower sliding weight – 0.2 kg increments

What's the weight? 34.90kg



# Other equipment

- Net mesh (wedge) gauge
- Measure 10-20 meshes – use to calculate an average





# Acknowledgements

- Thank you Rob Swanson & Karen Teig, North Pacific Groundfish Observer Program, for advice and access to flatbed scales!