



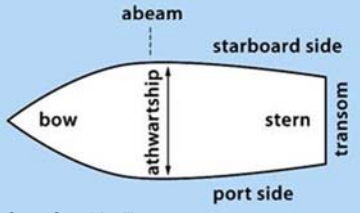
Nautical terms & vessel terminology

Objectives

- ▶ Define 4 terms relating to directionality on a vessel
- ▶ List 3 vessel dimensions
- ▶ List 8 types of vessel spaces & other structures

Nautical terms

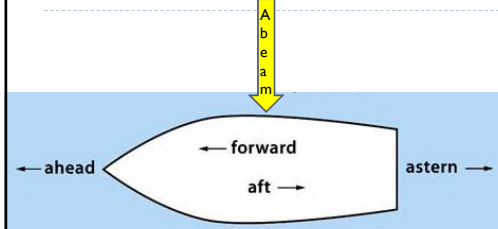
▶ Vessel orientation



US Coast Guard Auxiliary 2007



Nautical terms



Nautical terms

▶ Vessel dimensions

- ▶ Length overall – length from the tip of the bow to stern (o/a above)
- ▶ Beam – vessel width at its widest point (b below)
- ▶ Draft – vertical distance between the waterline & the bottom of the hull (d below)
- ▶ Freeboard – distance from the waterline to the first deck

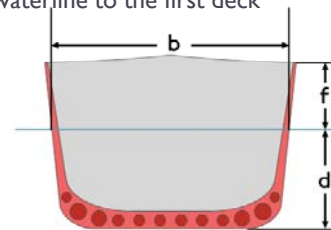
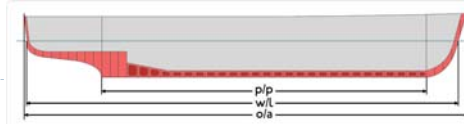


Image modified from
http://en.wikipedia.org/wiki/File:Ship_length_measurements.png

Nautical terms

▶ Vessel spaces & other structures

- ▶ Hull – shell and framework of the basic flotation-oriented part of a ship



Nautical terms

▶ Vessel spaces & other structures

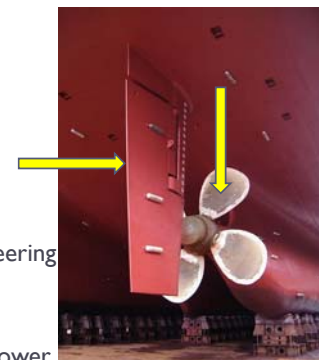
- ▶ Hull – shell and framework of the basic flotation-oriented part of a ship
- ▶ Bilge – interior of the hull
- ▶ Deck – permanent covering over a compartment or hull
- ▶ Hatch – an opening in a boat's deck



Nautical terms

▶ Vessel spaces & other structures

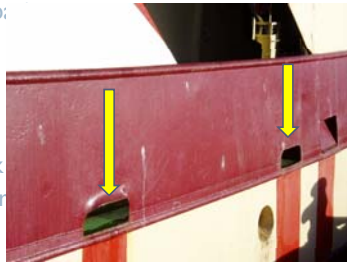
- ▶ Hull – shell and framework of the basic flotation-oriented part of a ship
- ▶ Bilge – interior of the hull
- ▶ Deck – permanent covering over a compartment or hull
- ▶ Hatch – an opening in a boat's deck
- ▶ Rudder – vertical plate or board for steering boat
- ▶ Screw – propeller
- ▶ Propeller – type of fan that transmits power by converting rotational motion into thrust



Nautical terms

▶ Vessel spaces & other structures

- ▶ Hull – shell and framework of the b: flotation-oriented part of a ship
- ▶ Bilge – interior of the hull
- ▶ Deck – permanent covering over a compartment or hull
- ▶ Hatch – an opening in a boat's deck
- ▶ Rudder – vertical plate or board for boat
- ▶ Screw – propeller
- ▶ Propeller – type of fan that transmits power by converting rotational motion into thrust
- ▶ Scuppers – drain holes on deck



Nautical terms

▶ Vessel spaces & other structures

- ▶ Bridge / wheelhouse – where primary vessel navigation occurs
- ▶ Engine room – location of engine's, usually on a lower deck
- ▶ Galley / mess – where cooking and/or eating occurs
- ▶ Head – marine toilet
- ▶ Cabin – rooms for sleeping
- ▶ Bunk – bed where you sleep
- ▶ Bulkhead – upright wall within the hull of the ship

Nautical terms

▶ Other –

- ▶ A-frame/gantry – A-shaped structure used to assist with lifting
- ▶ Winch – device used to haul line, cable, heavy objects
- ▶ Block – pulley or set of pulleys
- ▶ Gangplank – A movable bridge used in boarding or leaving a ship at a pier
- ▶ Bow thruster - A small propeller at the bow, used for maneuvering



RappHydema trawl winch - <http://www.nauticexpo.com>



Summary

- ▶ Name some terms relating to directionality on a vessel
- ▶ Define 3 vessel dimensions
- ▶ List 8 types of vessel spaces & other structures