



Nautical terms & vessel terminology

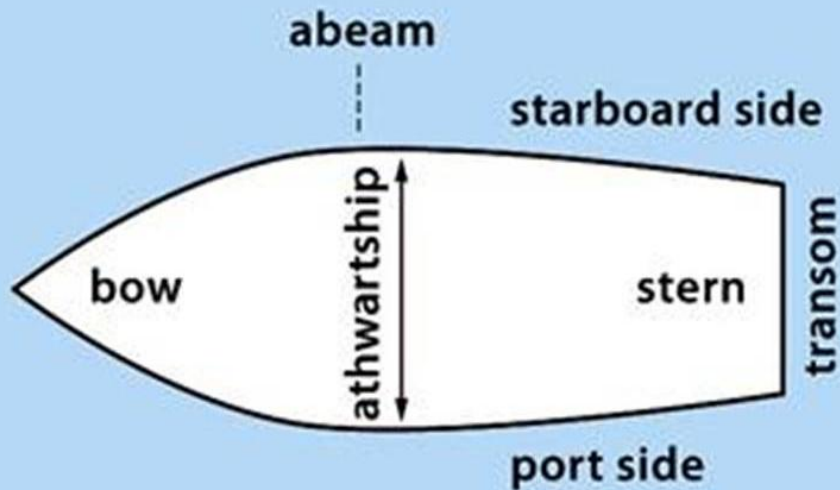
Objectives

- ▶ Define 4 terms relating to directionality on a vessel
- ▶ List 3 vessel dimensions
- ▶ List 8 types of vessel spaces & other structures



Nautical terms

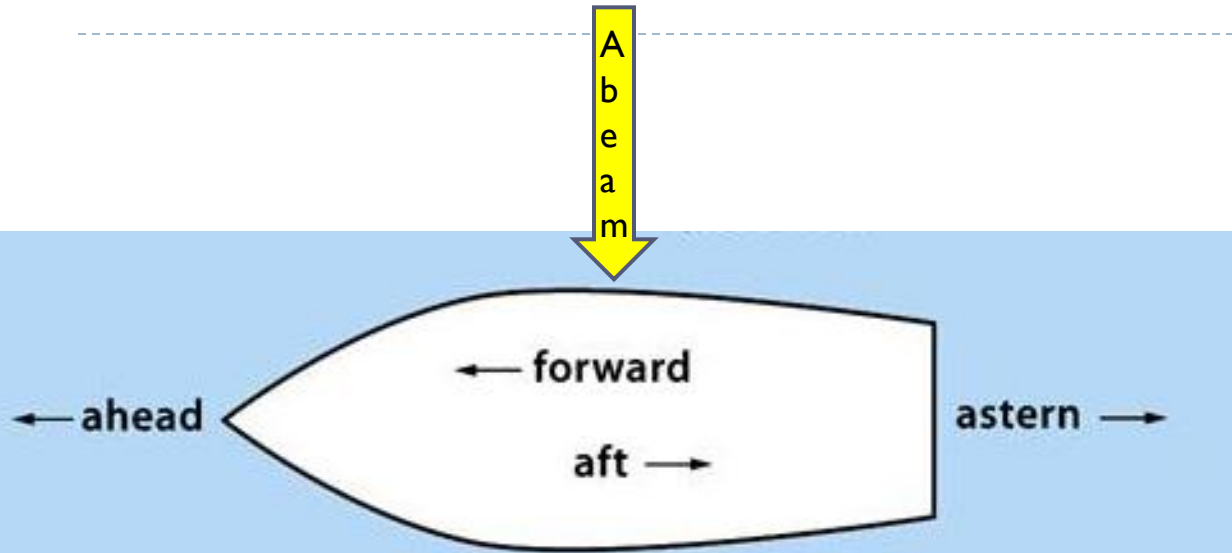
▶ Vessel orientation



US Coast Guard Auxiliary 2007



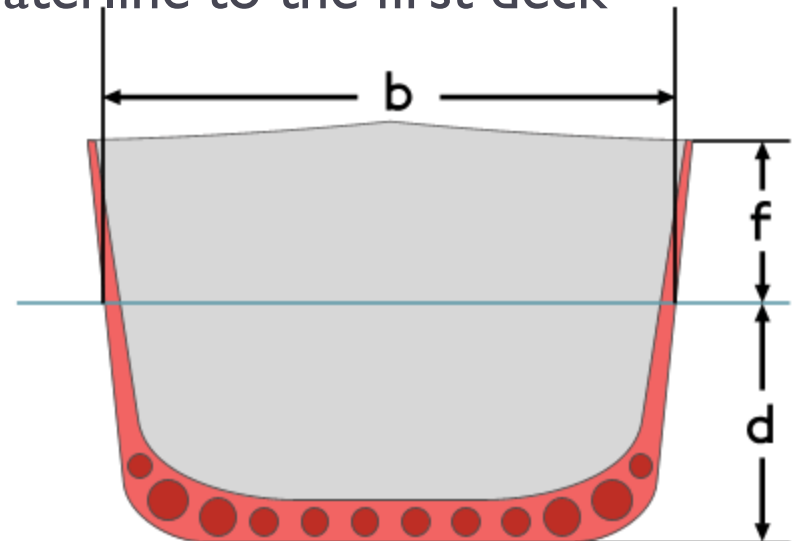
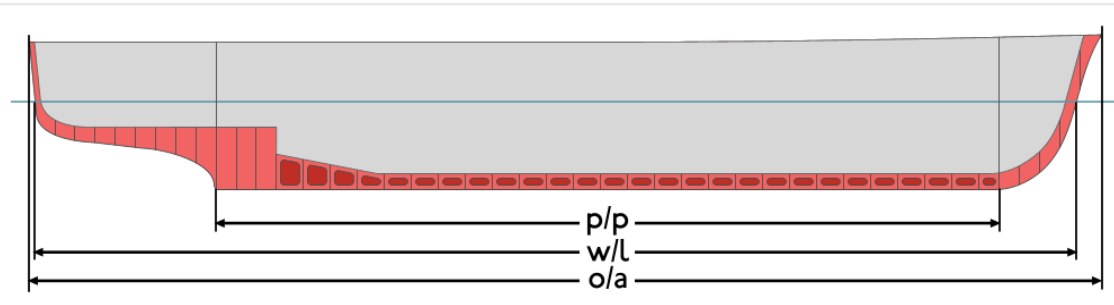
Nautical terms



Nautical terms

▶ Vessel dimensions

- ▶ Length overall – length from the tip of the bow to stern (o/a above)
- ▶ Beam – vessel width at its widest point (b below)
- ▶ Draft – vertical distance between the waterline & the bottom of the hull (d below)
- ▶ Freeboard – distance from the waterline to the first deck



Nautical terms

- ▶ **Vessel spaces & other structures**
 - ▶ Hull – shell and framework of the basic flotation-oriented part of a ship



webuildanyboat.com



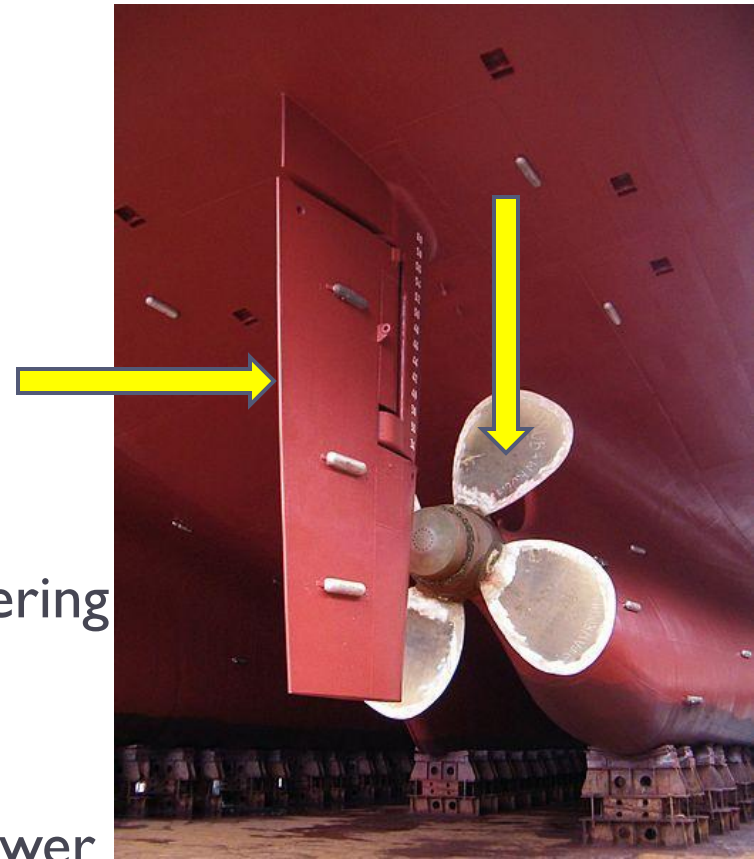
Nautical terms

- ▶ **Vessel spaces & other structures**
 - ▶ Hull – shell and framework of the basic flotation-oriented part of a ship
 - ▶ Bilge – interior of the hull
 - ▶ Deck – permanent covering over a compartment or hull
 - ▶ Hatch – an opening in a boat's deck



Nautical terms

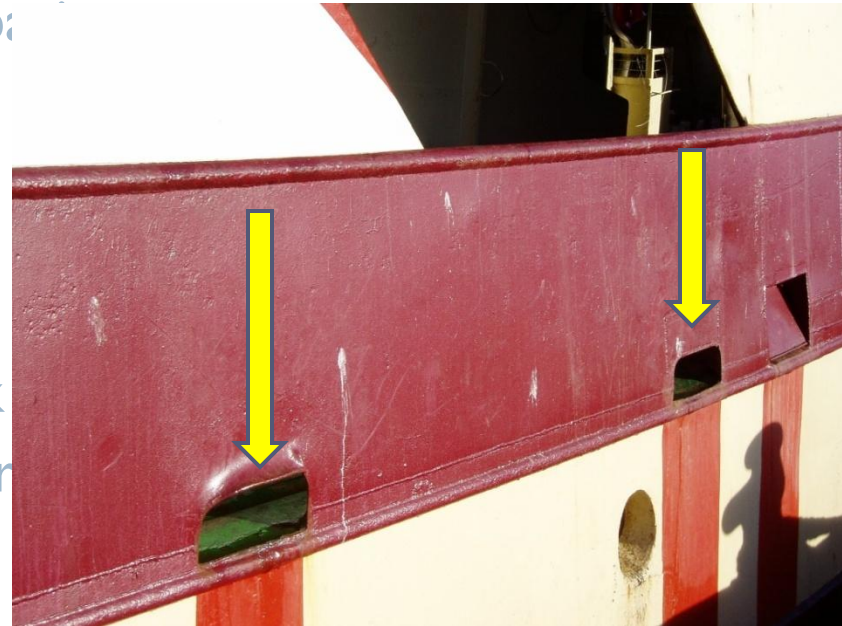
- ▶ **Vessel spaces & other structures**
 - ▶ Hull – shell and framework of the basic flotation-oriented part of a ship
 - ▶ Bilge – interior of the hull
 - ▶ Deck – permanent covering over a compartment or hull
 - ▶ Hatch – an opening in a boat's deck
 - ▶ Rudder – vertical plate or board for steering boat
 - ▶ Screw – propeller
 - ▶ Propeller – type of fan that transmits power converting rotational motion into thrust



Nautical terms

▶ Vessel spaces & other structures

- ▶ Hull – shell and framework of the boat, the flotation-oriented part of a ship
- ▶ Bilge – interior of the hull
- ▶ Deck – permanent covering over a compartment or hull
- ▶ Hatch – an opening in a boat's deck
- ▶ Rudder – vertical plate or board for steering a boat
- ▶ Screw – propeller
- ▶ Propeller – type of fan that transmits power by converting rotational motion into thrust
- ▶ Scuppers – drain holes on deck



Nautical terms

- ▶ **Vessel spaces & other structures**
 - ▶ Bridge / wheelhouse – where primary vessel navigation occurs
 - ▶ Engine room – location of engine's, usually on a lower deck
 - ▶ Galley / mess – where cooking and/or eating occurs
 - ▶ Head – marine toilet
 - ▶ Cabin – rooms for sleeping
 - ▶ Bunk – bed where you sleep
 - ▶ Bulkhead – upright wall within the hull of the ship



Nautical terms

▶ Other –

- ▶ A-frame/gantry – A-shaped structure used to assist with lifting
- ▶ Winch – device used to haul line, cable, heavy objects
- ▶ Block – pulley or set of pulleys
- ▶ Gangplank – A movable bridge used in boarding or leaving a ship at a pier
- ▶ Bow thruster - A small propeller at the bow, used for maneuvering



Summary

- ▶ Name some terms relating to directionality on a vessel
- ▶ Define 3 vessel dimensions
- ▶ List 8 types of vessel spaces & other structures

